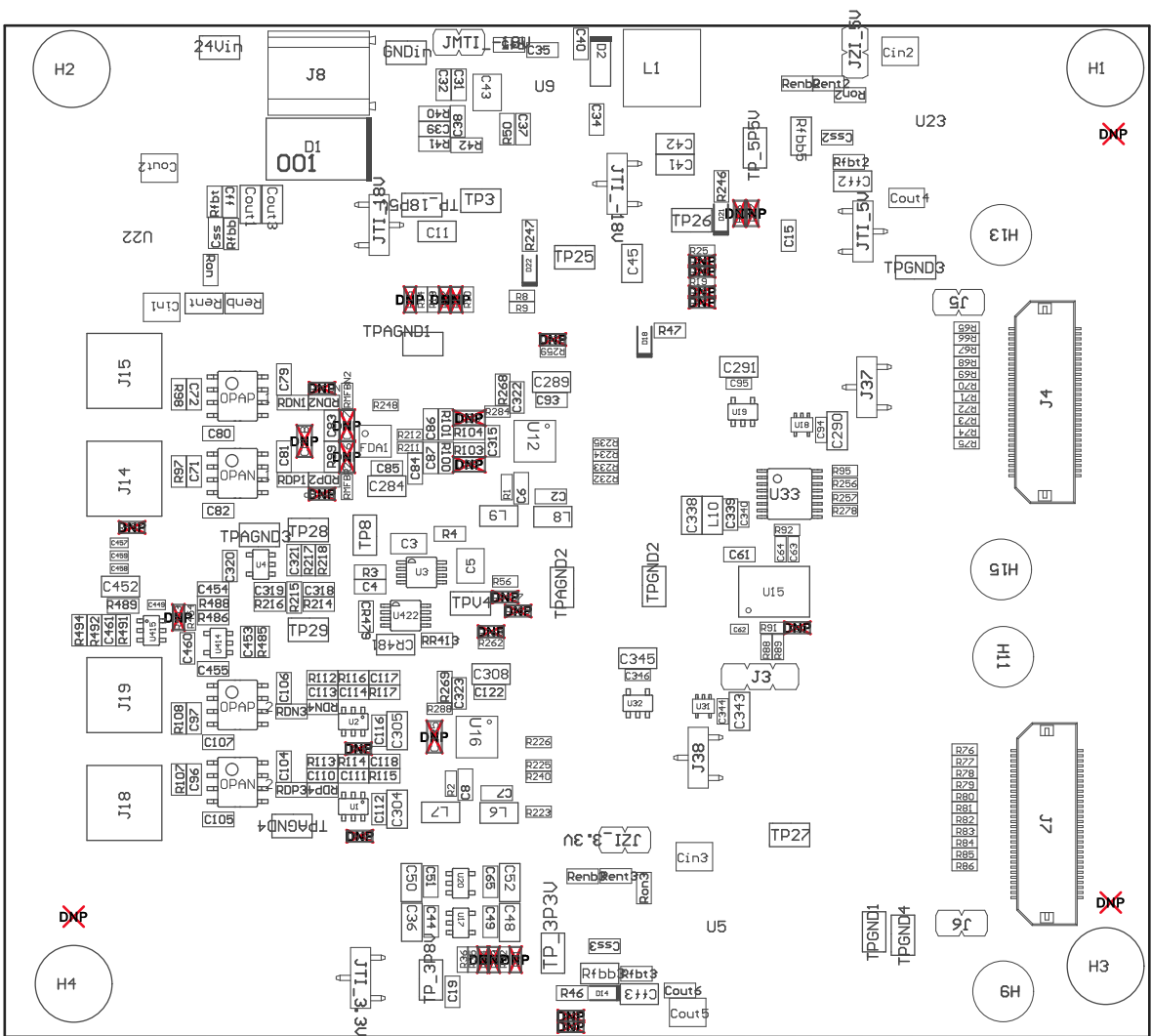


Z22 ■ These assemblies are ESD precautions shall be observed.
 Z23 ■ These assemblies must be clean and free from flux and all contaminants. Use of no clean flux is not acceptable.
 Z24 ■ These assemblies must comply with workmanship standards IPC-A-610 Class 2, unless otherwise specified.



PCB VIEWED FROM TOP SIDE	BOARD #: TIDA-01055	REV: E1	SUN REV: Not In VersionControl
	TID #: 01055		
PLOT NAME = Top Assembly Drawing	GENERATED : 3/16/2017 10:57:04 AM	TEXAS INSTRUMENTS	

